

A Community
Newsletter
from the
Grossmont –
Mt. Helix
Improvement
Association



viewpoints

Spring-Summer 2009

Volume 39 Issue 4



In This Issue:

**Fuerte Drive
Realignment...**
See page 3

**Interview with Helix
Water District...**
See page 4



**Tree Articles
Wanted...**
See page 6

Centerpiece Contest...
See page 6

**Annual Dinner
Reservation Form...**
See page 7

71st ANNUAL

DINNER MEETING

May 11, 2009

Our theme this year is "Roads and Traffic Throughout Mt. Helix." There will be a panel to answer questions from the audience on the traffic and roads we drive daily. The panel members are: Supervisor Dianne Jacob, Capt. Guy Chambers from the Sheriff's Dept. and Officer Brian Pennings, of the CHP, and a staff member from the Department of Public Works.

There will be paper and pencils at each table to write down your questions for the panel. The panel will be moderated and there will be ample time for discussion. Feel free to submit a question in advance with your reservation.

For this year's dinner buffet, there will be numerous food stations so you can pick and choose what and when you eat; only the salmon and beef stations will have servers. The food will be available from 5:45 – 7:00 pm (15 minutes earlier than in the past). Again we are fortunate to have The Abbey Catering Company prepare all the wonderful food — especially the chocolate cheesecake brownies!

For questions about the dinner or to make an online reservation, go to www.gmia.net.

A reservation form is also enclosed in this issue of Viewpoints; our deadline for reservations is May 5th. ▲



2009 ART & GARDEN TOUR

As a GMIA member you are entitled to participate in this annual tour of some of our area's creative and inspiring gardens, on Sunday, May 3rd. The Tour is not open to the public, but you may bring guests who enjoy fine gardens and art. THANKS to this year's homeowners for generously sharing their gardens. We also thank our talented artists whose art will be on display at each of the gardens.

Please park only where indicated. We need to comply with the terms of our County parking permits. Wear practical walking shoes, and remember—the Tour goes forward in any weather. Once again, Susan Nichols has coordinated this year's tour. You will find the descriptions of gardens and map as an insert in this newsletter. ▲

GROSSMONT - MT. HELIX



IMPROVEMENT ASSOCIATION

Officers

Allison Henderson, President
593-0443

Mark Schuppert, 1st Vice President
401-8003

Dan Mitrovich, 2nd Vice President

Vern Neff, Treasurer/Membership
579-2517

Ellen Phillips, Secretary
670-0986

Directors

Brian Arnold Susan Nichols

Diane Bernal Val O'Connor

Kay Bickley Jack Phillips

Rosemary Hewicker Jeff Rule

Dagmar Miller Mike Valley

Viewpoints is a community news-letter published by the Grossmont - Mt. Helix Improvement Association. Letters to the Editor should be sent to P.O. Box 2751, La Mesa, CA 91943-2751.

This newsletter reflects the efforts of your entire Board of Directors.

Editor: Allison Henderson

Design & Layout: Victoria Vinton,
Coyote Press Graphic
Communications

Photography: Karen Palmer and
Jeffrey Rule

Printing: Allegra Print &
Image / San Diego

www.gmia.net



Allison Henderson

Dear Neighbors,

GMIA started off our busy Spring season with a well attended neighborhood walk in Damon Lane Park. Over 100 neighbors gathered on a sunny Saturday morning to hear Fuerte Elementary School's Bruce Wollitiz discuss the incredible variety of flora and fauna found in Damon Lane County Park. You can see all the photos of the walk on our website (gmia.net).

GMIA's much anticipated annual garden tour occurs on Sunday, May 3rd. Please remember that this tour is for GMIA members and their guests only. As much as we'd love to showcase our incredible neighborhood gardens to the whole county, that would be impractical not to mention overwhelming for the homeowners who generously open their gardens to GMIA. Don't forget to take the insert with you on tour day!

Also in May is our Annual Dinner Meeting. Please attend this year's dinner where our speakers will be Supervisor Dianne Jacob, Brian Pennings of the California Highway Patrol, and Capt. Guy Chambers from the Sheriff's Department. Our theme will be "Roads and Safety in Mt. Helix."

Speaking of roads in Mt. Helix, I have been receiving a lot of phone calls from neighbors concerned about the Fuerte Drive realignment issue. Fuerte Drive has long needed attention to address the issue of speeding and consequent accidents. The County's Department of Public Works recently proposed a realignment of Fuerte between Calavo and La Rueda. DPW proposes a "taking" of neighbors' property and an expenditure of up to \$6.2 million. At the public hearing of the Valle de Oro Planning Group, a neighbor suggested that perhaps a more modest alternative would be better. Hence, a three-way stop sign at Alzada and Fuerte was proposed.

Let me state emphatically that there is no one solution that would make everybody happy and safe. Also, in full disclosure, three members of the VDO planning group are on your GMIA board. We all voted against the County proposal and in support of the stop sign idea. Read the article on the next page for more details.

As always, feel free to contact us with your questions, comments or (dare I say it...) complaints.

Happy Spring!

Allison Henderson



Fuerte Drive Realignment

One Neighbor's Perspective

by Allison Henderson

With this article comes a guarantee that you will either be mightily annoyed or supremely angry by the content. Either way, if you live in the Mt. Helix area, this is an issue that affects you on a daily basis right now and, perhaps even more so, in the future.

The County Department of Public Works has finally decided to address the needs of the over 200 homeowners along Fuerte Drive. Residents living along Fuerte Drive have complained for years about the speeds along this road. These neighbors of ours have a hard time getting in and out of their driveways without motorists honking and yelling at them (or worse!) According to the Chair of the VDO Planning Group, 40% of the vehicles on Fuerte come from areas outside of Mt. Helix (e.g., Rancho San Diego) and use Fuerte to avoid Jamacha and the backup at the 125/94 interchange.

What finally triggered DPW to do something? The answer isn't because of our collective neighborhood voice constantly complaining of the speeders. It's that an accident threshold has been reached which pushes a section of Fuerte Drive into a high priority situation for the staff at DPW. That is to say, there have been 28 accidents in the last 5 years near the Alzada/Fuerte intersection, so that now the County finally needs to act to reduce those numbers. It is worth recalling that the V Calm units that were put up along Fuerte last year were done so at the initiative of mHands, a local community group and NOT because a County agency thought something should be done about the speeding or accident rate. So, going from doing essentially nothing, the County now brings forth three proposals to the public. Briefly, the County proposes to condemn houses and spend up to \$6.2 million all with the goal of straightening out Fuerte at Alzada. The proposals also include widening the section in question to 50 or 70 feet, adding



sidewalks and a bike lane and of course, realigning the road so that the curve is minimized and sightlines increased. Fuerte Drive would remain a curvy, two-lane, semi rural country road except for that one section between La Rueda and Calavo.

At the recent VDO Planning Group meeting where this topic was on the agenda (March 17), the boardroom was packed with the homeowners from all 12 impacted parcels as well as dozens of concerned Mt. Helix residents. Not one neighbor spoke in favor of the County's proposals. All spoke of the need to address the speeding issue. One couple who lives at Alzada and Fuerte suggested that perhaps the County could try something less drastic and on a temporary basis. And that is how the idea of implementing an all-way-stop at Alzada and Fuerte came about. Will everyone love this proposed stop sign? Probably not—especially after considering the four-way stop at the Brigantine during the commuting hours. The hope is that the sheer inconvenience of adding an additional stop on Fuerte will not only reduce speeding and consequently accidents (the DPW's primary goal here) but will also be a deterrent for folks choosing to travel Fuerte to avoid Jamacha and the mess at the 125/94 interchange.

One final point: While I am aghast at the County having spent so much time and expertise on exceedingly expensive proposals that are so obviously out of touch with the reality of the Mt. Helix residents, I still think the process worked. The DPW goal, in this instance, is to try to reduce accidents without impeding the flow of traffic. As one DPW staffer said to me a few years back, he would like to see Fuerte Drive be a straight line! They have an entirely different perspective than the people that live in this area. They reach their thresholds, they have their warrants and then they conduct public hearings to inform the residents of why they engineered

See FUERTE on page 5



Interview with Kathleen Hedberg Helix Water District, Board of Directors

Ms. Hedberg is a Registered Civil Engineer with a Masters Degree in Public Health. She has worked for nearly 10 years as an Associate Sanitary Engineer for the State of California, Department of Public Health Drinking Water Program, ensuring compliance with the Safe Drinking Water Act. She was elected to the Helix Water District board of directors in November 2006.

GMIA: Please explain the changes Mt. Helix residents can expect next month in their water bills.

KH: Water rates will increase by at least 20% and on a tiered sliding scale up as you use more water.

GMIA: How is that possible!?

KH: San Diego is in a drought situation. There is a serious water shortage issue everywhere our water comes from. We are now in a Level 1 water supply shortage situation which means cutbacks are voluntary. If the drought gets worse, we go to Level 2 and cutbacks will be mandatory with an up to 20% restriction and a penalty system will be imposed on water wasters. Also, rates increase further as you go from a Level 1 to a Level 2 situation.

GMIA: The tiered water rate structure is confusing. The pamphlet Mt. Helix residents received in the mail last month was difficult to read. Could you explain it in regular, homeowner terms?

KH: We are already in a tiered structure. There is a base charge on your water bill so that even if you don't use ANY water, you have a standby or base charge. Then, there is a commodity charge which is tiered to how much actual water you use. So, the base rate is \$34.80 and with the 20% increase, your base rate will be \$41.71. A "super saver" or low water user now pays the commodity charge of \$1.70 per unit and will see that charge rise to \$2.04 per unit (a 20% increase). The

Metropolitan Water District's Level 1 Drought Watch

1. Stop washing down paved surfaces.
2. Stop water waste from landscape irrigation runoff.
3. Irrigate residential and commercial landscape before 10 a.m. and after 6 p.m. only.
4. Use a hand-held hose equipped with a positive shut-off nozzle or bucket to water non-irrigated areas.
5. Use recirculated water to operate ornamental fountains.
6. Wash vehicles using a bucket and a hand-held hose with positive shut-off nozzle.
7. Serve and refill water in restaurants and other food service establishments only upon request.
8. Offer guests in hotels and motels the option of not laundering towels and linens daily.
9. Repair all water leaks within five (5) days of notification by the Helix Water District.

average user is a Mid Tier rate payer, at 33 units and will see about a 22% increase. High users, at 75 units, in the Excessive Tier will see a 49% increase on their bi-monthly bills. For example, the average “excessive” water bill will rise from \$239 to \$358.

GMIA: What can we do about this?

KH: Most of a homeowner’s water usage is for outside landscaping. I highly recommend a visit to the Water Conservation Garden at Cuyamaca College to see how to xeriscape your yard. They have a “Bye Bye Grass” class that I heard is very good. Check it out online at www.thegarden.org. Also, the Helix Water District has a rebate program for water conservation equipment. Go to www.hwd.com for more information.



Xeriscape landscaping

GMIA: One final question: Why did you vote against the proposed rate increase?

KH: The Helix water rate is based on an estimated rate increase from the San Diego County Water Authority, which is based on a proposed increase from the Metropolitan Water District. They have

NOT determined their final rate increase so our rate increase is just an estimate of an increase that hasn’t happened yet. Also, Helix proposes to implement the increase 6 months before the rate increases occur and at the hottest time of the year. No other water districts increase their rates in summer. Actually, depending upon the homeowner’s billing cycle, some Mt. Helix residents will see the rate increase reflected from water use from May and/or June. That leaves no time for folks to prepare. I don’t think that’s appropriate.

GMIA: Thank you for your time and expertise.

Editor’s Note: Helix Water District will be having a public hearing on the rate increases on Wednesday, May 27, 2009 at 2:00 pm in their board room, 7811 University Ave, La Mesa. If you have an opinion, be sure to attend. Also, they are accepting written comments until the day of the hearing. If 50% of the 55,000 or so households in the district complain (that means 27,500 homeowners need to be heard from!), then they will reconsider.

Editor’s Final Note: As a homeowner who knows and understands what living in a desert means and still has a hard time considering life in the burbs without her lovely green lawn, I urge us all to think long and hard about this issue... there are no easy solutions to this one. ▲

FUERTE, continued from page 3

the projects the way they did. Our job, as informed citizens, is to attend those hearings and to provide a reality check on their engineering endeavors. We are the eyes and ears of our neighborhood and we know how it works better than they do. Here’s a shout out to all the neighbors who stood up to be counted at the VDO meeting. Let’s hope they listened to us!

Please know that GMIA and VDOPG are both earnestly following this issue. In the meantime, if you have more questions, the Fuerte Drive Realignment project planner for DPW is April Torbett (619) 694-8982. Why not let her know what you think! ▲



2008 Winner by Marcia Peterson

Centerpiece Contest

Show Us Your Best

Why not boast of your beautiful flowers, vegetables or succulents? For the third year we encourage you to bring your best to enter in our contest. We will also use them as centerpieces for the dinner tables, but you can have them back after the meeting. The membership will make their favorite selections and the three prizes awarded will be the Best in Design, Best in Color and Best in Flowers. Come on and "show us what you got," displayed in your own style! The only limitations are your imaginations and the size of the centerpiece.

Rules and Guidelines

1. Finished size maximum is 20" x 20".
2. Attach your name to the bottom of the arrangement (it will be removed later for anonymity during voting).
3. Use only plants from your own garden or yard.
4. Deliver your entry between 2:00-4:00 pm on May 11 to the La Mesa Community Center.

To let us know you want to participate, enter your name and phone number on the bottom of the Dinner Reservation form (or also on our website at www.gmia.net). If you have any questions, please call Kay Bickley at 619-318-5260. ▲



Nature Walk

Bruce Wollitiz from Fuerte Elementary School talked about the flora and fauna in Damon Lane County Park with more than 100 neighbors who attended our Spring Nature Walk. Thanks, Bruce, and all those who joined in.



Backyard Tree Articles Wanted

The GMIA Viewpoints is looking for future articles on interesting, unusual, or rare trees that occur on one's property or street in the Grossmont-Mt. Helix area. It could be a tree that has an unusual story behind it or a mature or large tree that was planted long ago.

If you have a tree that you would like to share with fellow members, please call Jeffrey Rule (Director) at (619) 466-0362, and he can schedule a site visit to photograph the tree and write an article. ▲



– 71st ANNUAL –
**Dinner
Meeting**

The Grossmont-Mt. Helix Improvement Association would like you to join us

Monday, May 11, 2009

La Mesa Community Center, 4975 Memorial Drive, La Mesa

PROGRAM

5:00 – 6:00 p.m. Mingle and Mix, No Host Bar
6:00 – 7:00 p.m. Dinner, Open Seating
7:00 – 7:20 p.m. Presentation of the Flag
GMIA Business Meeting
Election of Officers
Awards Presentation
7:30 – 8:30 p.m. Panel Discussion

Topic for discussion:

ROADS AND SAFETY THROUGHOUT MT. HELIX

Panel Members – Diane Jacob, Capt. Chambers, Officer Brian Pennings, Staff Member from DPW (tba)

For questions about the dinner, go to www.gmia.net and click “Contact GMIA”



Detach this section and mail it along with your check to: GMIA, PO Box 2751, La Mesa, CA 91943-2751
Please respond promptly as seating for dinner is limited. Your reservation will be held at the door.

Name(s) (for name tag) _____

I (we) would like to reserve space at the
Annual Meeting & Dinner on May 11th.

I'd love to share the “best” from my garden or yard as a
centerpiece for the contest.

Number of Reservations Total Enclosed (\$25/person) \$

Name: _____

Phone: _____

Write below to submit your question in advance for panel on Roads and Safety (will be anonymous!)

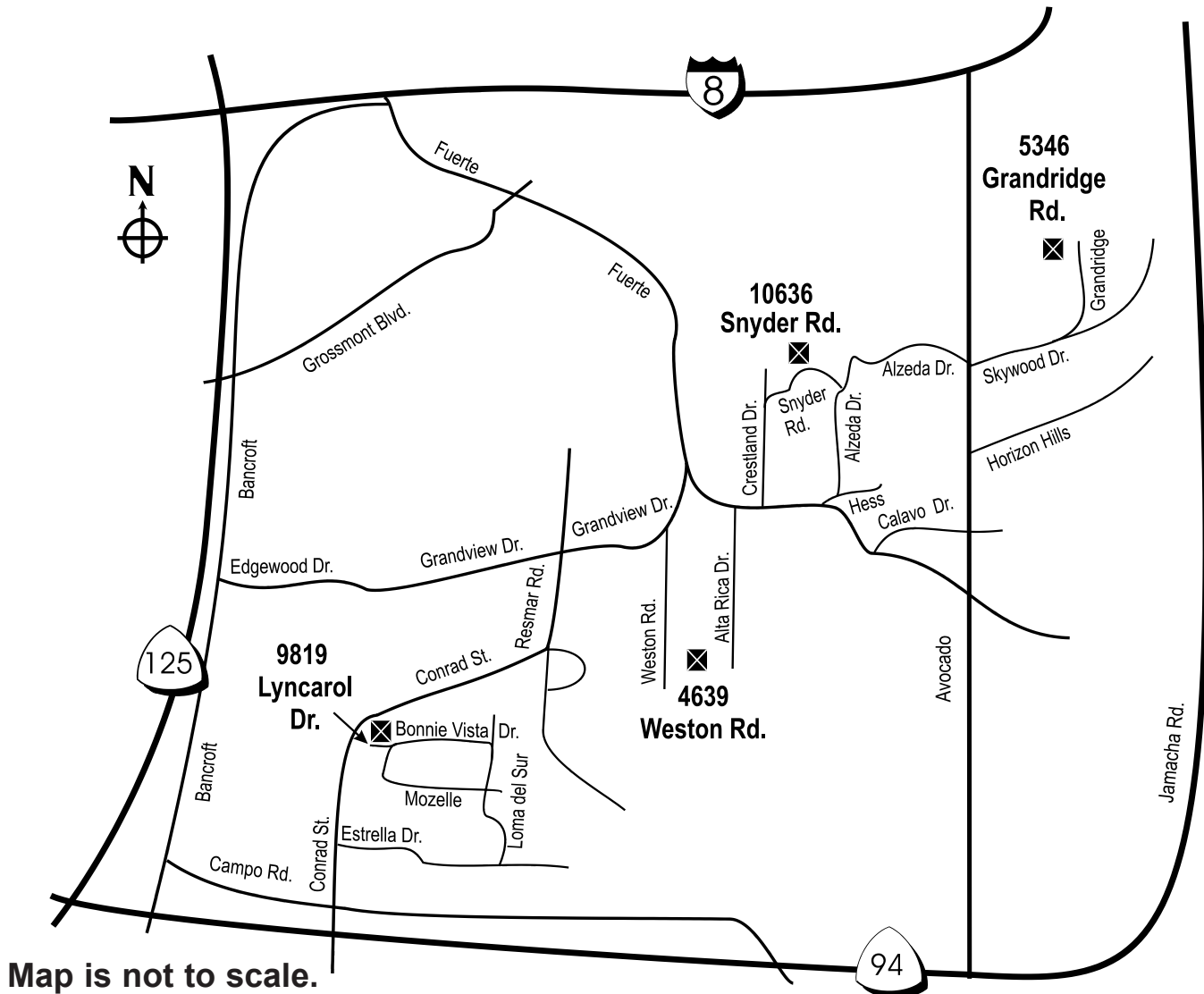
PLEASE RSVP BY MAY 5, 2009

Grossmont - Mt. Helix Improvement Association

2009 ART & GARDEN TOUR

Sunday, May 3rd 🍀 Noon - 4 p.m.

On behalf of our GMIA members, thank you to our Art & Garden Tour hosts who have generously provided their beautiful gardens for our event. Thank you also to our fine artists whose work will be on display for purchase and enjoyment. As always, please show consideration when parking and do not block the road or drive-ways. Be sure to wear flat walking shoes as some properties have a slope or stairs. Children who are respectful and under control are welcome—no playing or running around. We hope you enjoy this year's tour. 🍀





The GARDEN of Bryan & Jora Vess 10636 Snyder

This beautifully restored mid-century modern home, San Diego Home & Garden Magazine's "2009 Home of the Year," features a handsome drought-tolerant garden situated on a hillside slope. Bryan and Jora purchased the home just two years ago. In only nine months, Jora's brother-in law, a landscape contractor, transformed the one acre plus parcel into the award winning design you see today.

When they bought the home, the entry was covered by overgrown juniper. Bryan and Jora uncovered the entry area to discover rockwork created by the original builder. These dramatic boulders were moved to their current location to clear the original building pad. A walkway leads to the front door and welcomes guests with a freeform Malcolm Leland "LS" sculpture and koi pond. The lower left portion of the property has been terraced for four productive raised beds where seasonal vegetables are cultivated, a large chicken coop housing seven laying hens, and a fruit tree grove. Paths made of decomposed granite wind in a field of lavender, rosemary, sages and prostrate coyote bush. Mature oleanders surround this area for privacy, along with established silk floss, jacaranda, and podocarpus trees.

Climb up a few steps to the house site. Here you will find a palo verde tree, variegated agave, barrel cacti and various ornamental low water grasses. Follow the gravel path to the upper level that offers eastern views and overlooks the pool area. Planting of Lady Banks roses cover the fence, along with Pride of Madeira. Octopus agave, blue fescue, blue chalkfingers, and aloe with grey tones compliment the poolside area. The pool has a large shallow sun shelf and integral cover to ensure safety for the young family. This lush yet low-water garden incorporates sensitive design, careful planting, and meticulous maintenance to inspire the viewer.

The ART of Caroline Morse

Caroline is a transplant to California via New York State, where she lived for forty years, and Seattle, Washington. After careers as a clinical social worker and art therapist, executive director and foundation administrator, Caroline returned to her early love of art and painting. Studying at the Athenaeum and with Sebastian Capella, Caroline developed her own style of interpre-

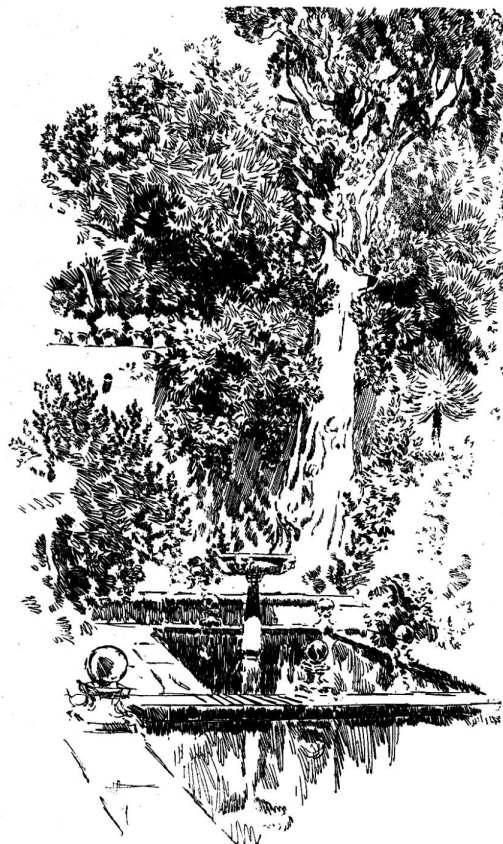
tive realism. Bright and unexpected colors are distinctive characteristics of her work. Her landscapes focus on the richness of the Southern California countryside. Email: chmorse1@cox.net.

The ART of Brent Foster

Brent Foster studied painting with Robert Brackman and Richard Bove at the Art Student's League in New York City and has worked under acclaimed California watercolorists Millard Sheets, Phil Dike, and Annette Paquet. Also as a Fulbright scholar, Brent researched Norwegian medieval art in Oslo, Norway. She has illustrated books, completed portraits and mural commissions, and currently exhibits artwork at the San Diego Watercolor Society and the San Diego Art Institute.

The ART of Christine Waters

An enduring love of nature and art compels Christine to paint plein air (on location) in watercolor. Carrying a bag with art supplies and paper is a simple way to discover beautiful landscape subjects and paint "in the moment." Using fine art drawing techniques from earlier college years and watercolor methods learned in continuing art studies and workshop (notably A. Paquet), she translates the mood of places undisturbed by human processes. Another subject of great interest is the human figure and spirit of each individual. To capture the mood or essence of these is her challenge and delight. She is a member of the San Diego Watercolor Society. 🌿





The GARDEN of Russ and Liz Vieira 4639 Weston Rd.

From front yard to back, Russ and Liz have spent eleven years personally designing and building the perfect retreat for family and entertaining. The entry now boasts handsome rock walls, curving borders, a rose garden, and graceful birch trees. As you make your way to the backyard, note the huge staghorn fern ensconced in a macadamia tree. This specimen dates from 1930 and was originally owned by Mr. Weston, for whom the street is named. The .55 acre parcel features a pebble-bottom "Tahoe-blue" pool ringed with natural boulders and quartzite stone. When day turns to night, the Vieiras enjoy the fire pit with lava rock and a working chandelier in the pool-side cabana complete with curtains made by Liz.

When the family was younger, a former tack shed was reinvented as a charming playhouse. Now, the shingled cottage provides plenty of stylish storage for patio furniture in the off-season and pool toys in summer. Wisteria covers the pergola built by the owners, who also made the concrete formed cobble. They lugged 182 wheelbarrows of topsoil to provide a terrace for the lush new fescue lawn.

With a keen eye for recycling materials, Russ and Liz transformed an olive tree stump to a rustic table. Other great recycling ideas include the use of railroad ties (free on Craig's List!) for terracing, the newly installed palapa made from a satellite dish covered with Tahitian thatch, and tiki carved by Russ. Lush fruit trees and a big vegetable garden complete this attractive landscape.

The ART of Susan Nichols

Our GMIA Art & Garden Tour Director creates "pique assiette" mosaics featuring vintage china, tile and found objects. Susan is a member of the Society of American Mosaic Artists (SAMA). Self-taught, her current work explores embellishing objects such as teapots, mirrors and bowls with whimsical, colorful designs. She occasionally teaches mosaic classes & exhibits in the community; for information contact her at lsnnichols@cox.net.

The ART of Teresa Shaffer

This San Diego native graduated from Point Loma High School and San Diego State. After teaching in elementary schools and raising six children, Teresa is able to devote more time to her favorite activity – oil painting. Her fruits, vegetables, florals, and landscapes hang in many homes throughout the country. Her painted egg from the White House Easter event rests in the Smithsonian Vaults in Washington, D.C. She is an active member of the Foothills Art Association in La Mesa.

The ART of Carol Garonzik Wells

After retirement from a successful career as a marriage and family counselor, university professor, and host of a radio talk show, Carol rekindled her love of art. She works in a variety of mixed media, including painting, collage, and mosaic. On display are her unique bird homes made of recycled materials. Each one-of-a-kind creation is made of styrofoam packing material complete with paint, tile, and plants. 🌿



The GARDEN of Jackie & Michael Sciulli 9818 Lyncarol

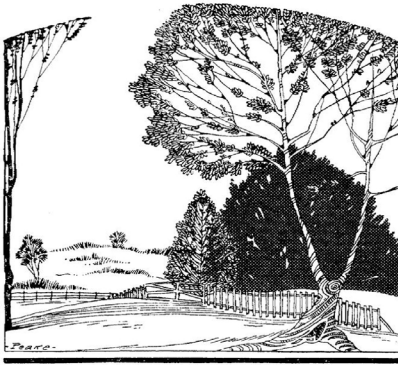
Formerly on our tour in 2007, we again feature Jackie and Michael's garden designed for entertaining friends and family at backyard events. Reflecting the English Tudor style of the home, this petite formal English garden is complete with fountain and sundial. Planting beds are bordered with brick and contain boxwood, roses, gazanias, and herbs. Oleander and solanum (potato vine) are pruned as standards to add an upright design element in each bed. An attractive outdoor fireplace with comfortable chairs overlooks the peaceful hillside view. The ample double-size glider is the perfect spot for a shady afternoon snack. A new outdoor kitchen and bar complete the outdoor spaces.

Throughout the garden you will find classical style statuary which ornaments the garden. Look for numerous art works tucked amongst the foliage. Bordering the swimming pool are pyracantha columns, pride of Madeira, and purple cranesbill geranium. Comfort and entertainment ease are the hallmarks of this appealing garden.

As a special treat, Jackie and Michael will fire up the grill, serving hot dogs and soda for a small donation. All funds will benefit our Grossmont – Mt. Helix Association to help defray expenses of our Art & Garden Tour. Thank you, Jackie and Michael, for donating your time and supplies. We appreciate your generosity!

The ART of Jason Feather

Jason Feather works on refining the art of graffiti by taking an instinctive, stream of consciousness approach to his art. He experiments with aerosol paint to create his personal rendition of clean lined/stylized urban pop art. Jason takes inspiration from everything from the sultry seductive female body form, pop culture, and even nature. If you would like, he can even turn one of your favorite photographs of your house, a pet, or loved one into one of these refined urban pop art masterpieces. For up to date info on Jason's work please visit www.jfeather.com. 🌿



The GARDEN of Sarah & Lee Rogers 5346 Grandridge

Dramatic vistas to the north were a big attraction for the Rogers when they purchased their hillside property six years ago. From the overlook at their pool, you can see the many plants and unique features they have incorporated in their landscape. A winding path heads downhill past five slow growing pinto palms, date palms, lavender, crown of thorns, and a cactus collection. Check out the badminton sand court with a bougainvillea border. Native boulders were relocated to provide seating perches for watching the game.

Avid golfers will enjoy the two golf cages built into the hillside grotto. Jacaranda trees will provide shade as they mature. Butterfly bushes cleverly hide the pool equipment. Other plantings include giant bird of paradise, sedums, Madagascar palm, and huge 8' aloe. Be sure to note the playful relocation of boulders that created a giant stone version of "Fred Flintstone's Lazyboy with ottoman." Also, the handsome entry courtyard in the front of the home features a large dolphin fountain, saltillo tile flooring, and a potted plant collection. This garden continues to evolve with water-wise plantings and utilization of the unique hillside location.

The ART of Mary Laurino

Mary is a wildlife and landscape artist. A resident of the La Mesa area and a long-time member of the Foothills Art Association, she has worked with watercolor, oil and pastels with various subjects. She is happiest painting wildlife, usually with pastels and enjoys creating not just the look, but the personality of the animal.

The ART of Sandra Angelo

Sandra is a national producer and artist. She specializes in teaching art to people who can't even draw a straight line, and the author of the award winning textbook, *Exploring Colored Pencil*, plus 18 DVDs, step-by-step books and coaching programs. An expert in colored pencils, watercolor pencils, and graphite, Sandra plans to draw live during the garden tour.

The ART of Sarah Rogers

Our garden tour homeowner, Sarah, is a member of the San Diego District Chapter 202 of the Colored Pencil Society of America, a non-profit organization to promote the stature and awareness of colored pencil to professional art establishments. Her work features a variety of subjects including photo-realism, abstract, portrait, and landscape. She recently was featured in an exhibition at Gallery 21 in Balboa Park. Sarah has invited members of the Colored Pencil Society to join her throughout the garden. 🌿



If you would like to participate in or help with next year's Art & Garden Tour, please contact GMIA at

www.gmia.net

or write us at

GMIA

P. O. Box 2751

La Mesa CA 91943-2751

This Art & Garden Tour is produced by GMIA boardmember Susan Nichols who also edited this guide; boardmember Jeffrey Rule is Art Curator; boardmember Mike Valley is Logistics Coordinator; members Don Newcomb, Carole Caparas and boardmember Rosemary Hewicker are Garden Scouts.

Design and layout by Victoria Vinton, Coyote Press Graphic Communications.

© Copyright 2009 GMIA



GROSSMONT - MT. HELIX



IMPROVEMENT ASSOCIATION

The Grossmont- Mt. Helix Improvement Association (GMIA) is one of the oldest and largest association of its type in San Diego County. It was formed in 1938 as a result of community concern for the lack of adequate land use planning and zoning type requirements. It is a non-profit public benefit corporation that represents thousands of families residing in the large unincorporated area of the County that is east of Bancroft Drive, south of El Cajon, generally north of SR94 and Rancho San Diego, and west of SR54/Jamacha Rd. The GMIA area contains over 7,000 single-family residences with a population approximating 20,000 people.

The primary mission of GMIA is to work on behalf of all GMIA community members to ensure that the quality and character of our community is preserved and enhanced. Unlike a typical "homeowners association,"

GMIA does not own any property or facilities, nor is it responsible for any property maintenance. GMIA is served by an elected, unpaid Board of Directors and has no paid officers or employees. The GMIA Board works with County and regional governmental entities to help resolve issues that impact our community such as transportation systems, traf-

fic control, planning and land use, zoning, code enforcement, as well as crime prevention and law enforcement.

GMIA invites and encourages all residents in our membership area to become active members and to support the efforts of the GMIA Board to preserve and enhance the character and lifestyle that are currently enjoyed in our wonderful community.

For more information on GMIA, please visit our website at www.GMIA.net ■